

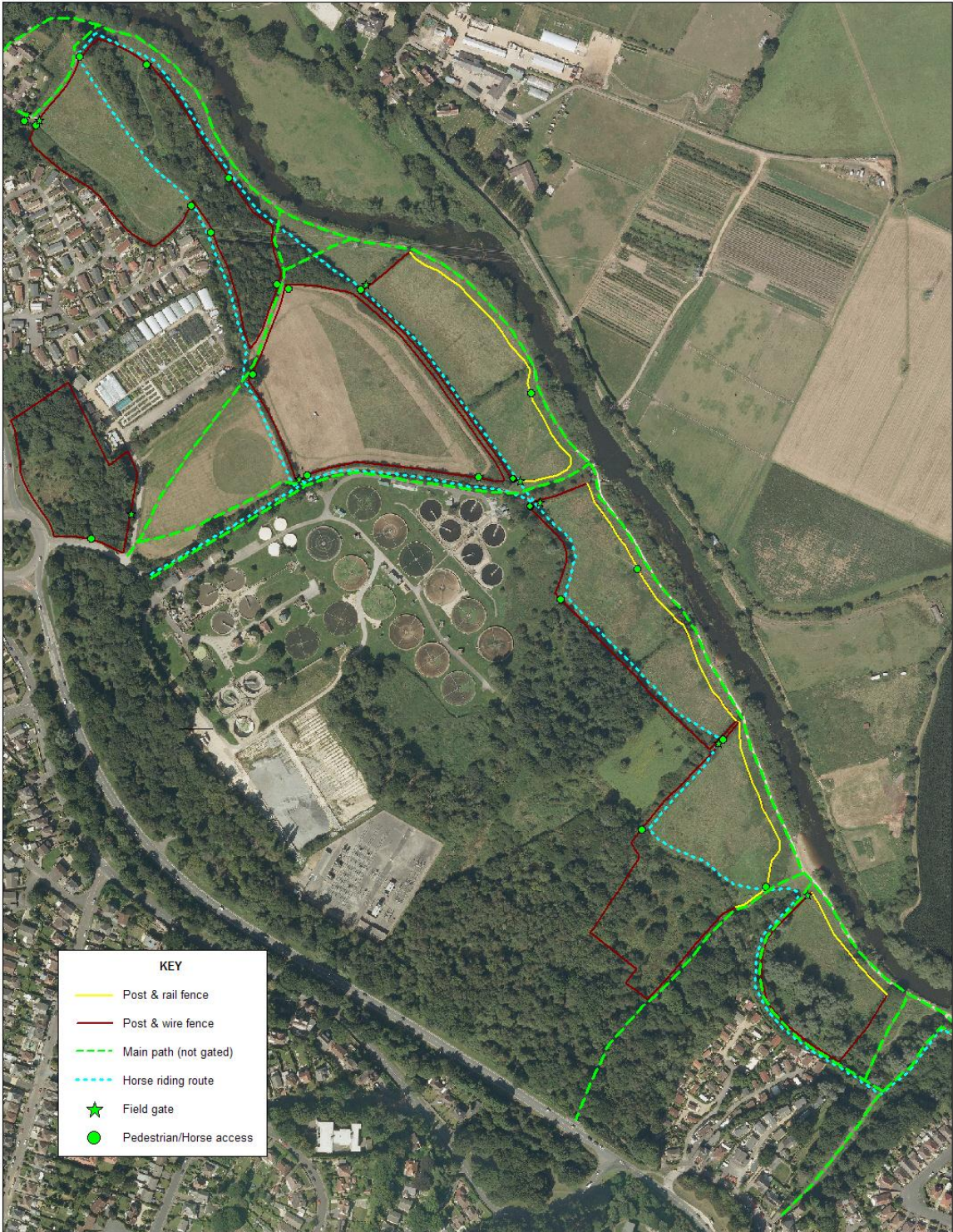








Cattle Grazing

We are getting closer to a decision being made on whether the Council will graze cattle on the Stour Valley during the summer months. This very controversial scheme has raised many concerns with residents and local dog walkers. The Council's original plans were to fence seven areas of land along the length of the River Stour and land adjacent to Cherry Tree Nursery and Brecon Close.

Following public consultation, two North Bournemouth Area Forums and a petition to Cabinet, we are hoping to have a meeting to finalize the decision.

See Pictures on pages 2 and 3



KEY	
	Post & rail fence
	Post & wire fence
	Main path (not gated)
	Horse riding route
	Field gate
	Pedestrian/Horse access



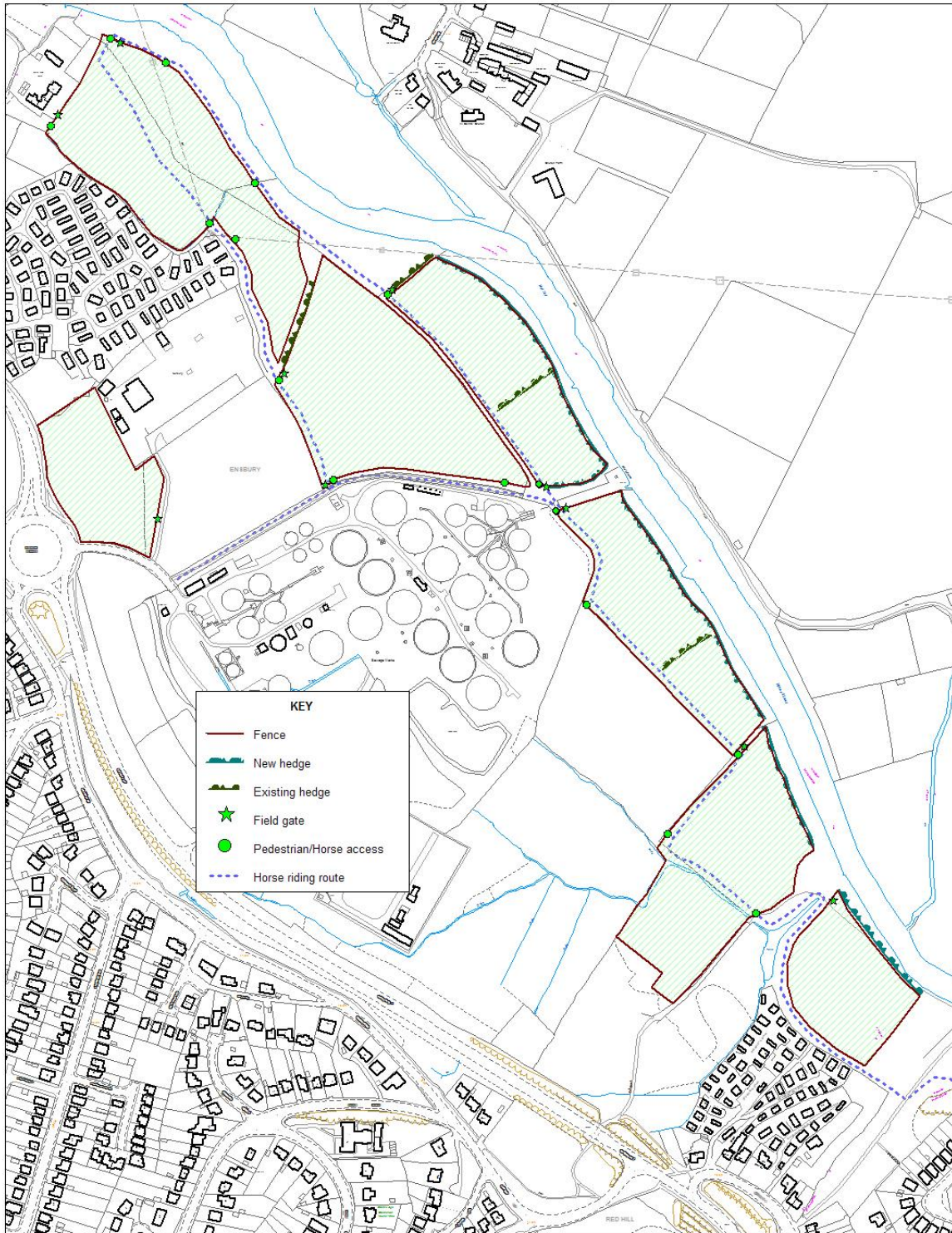
**Stour Valley
Grazing proposals**

Scale 1:3000
Date: 8 September 2011
Drawn By: S Clarke

Reproduced from Ordnance Survey material with the permissions of Ordnance Survey on behalf of the Controller of Her Majesty's Stationery Office. © Crown Copyright. Unauthorised reproduction infringes Crown Copyright and may lead to prosecution or civil proceedings. 100019829 2011



The scale indicated on this drawing is approximate only and should not be used for taking accurate measurements.



**Stour Valley LNR
Proposed grazing**

Scale 1:3000
Date: 17 November 2010
Drawn By: S Clarke

Reproduced from Ordnance Survey material with the permissions of Ordnance Survey on behalf of the Controller of Her Majesty's Stationery Office. © Crown Copyright. Unauthorised reproduction infringes Crown Copyright and may lead to prosecution or civil proceedings. 100019829 2009



The scale indicated on this drawing is approximate only and should not be used for taking accurate measurements.